



IBT Program Overview

Public Meetings for
Proposed Fuquay-Varina IBT
Oct. 14, 20 & 21, 2020

Harold Brady, Division of Water Resources



Outline

- I. Interbasin Transfer (IBT) Definition
- II. Statutory Requirements
- III. IBT Process
- IV. EMC Decision Considerations



IBT Definition & Purpose

- The withdrawal of surface water from one river basin and discharge of all or any part of the water in a river basin different from the origin.
- The purpose of the Interbasin Transfer Law is to ensure it is good public policy to move water from one river basin into another.



Statutory Thresholds

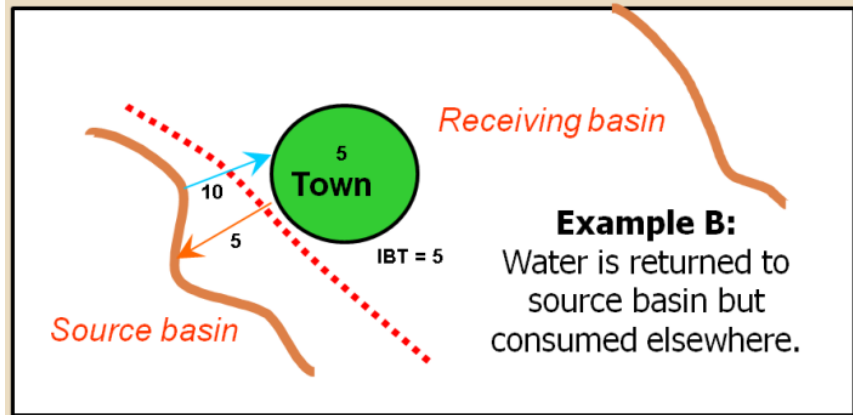
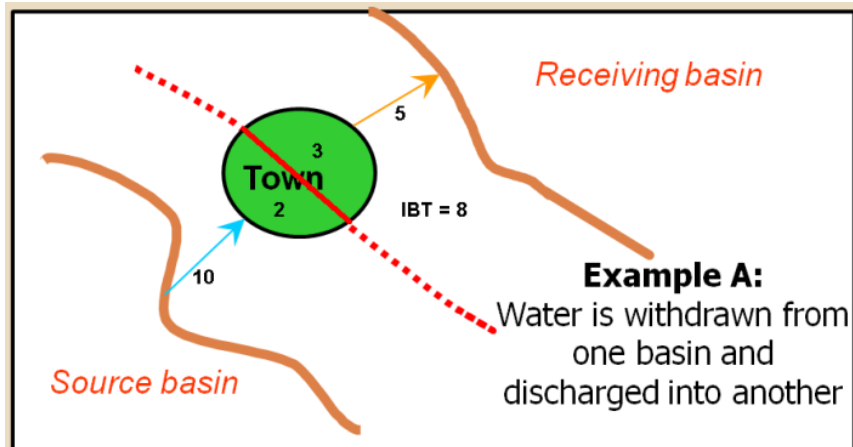
§ 143-215.22L Regulation of surface water transfers.

- (a) Certificate Required. - No person, without first obtaining a certificate from the Commission, may:
1. Initiate a transfer of 2,000,000 gallons of water or more per day, calculated as a daily average of a calendar month and not to exceed 3,000,000 gallons per day in any one day, from one river basin to another.
 2. Increase the amount of an existing transfer of water from one river basin to another by twenty-five percent (25%) or more above the average daily amount transferred during the year ending 1 July 1993 if the total transfer including the increase is 2,000,000 gallons or more per day.
 3. Increase an existing transfer of water from one river basin to another above the amount approved by the Commission in a certificate issued under G.S. 162A-7 prior to 1 July 1993.



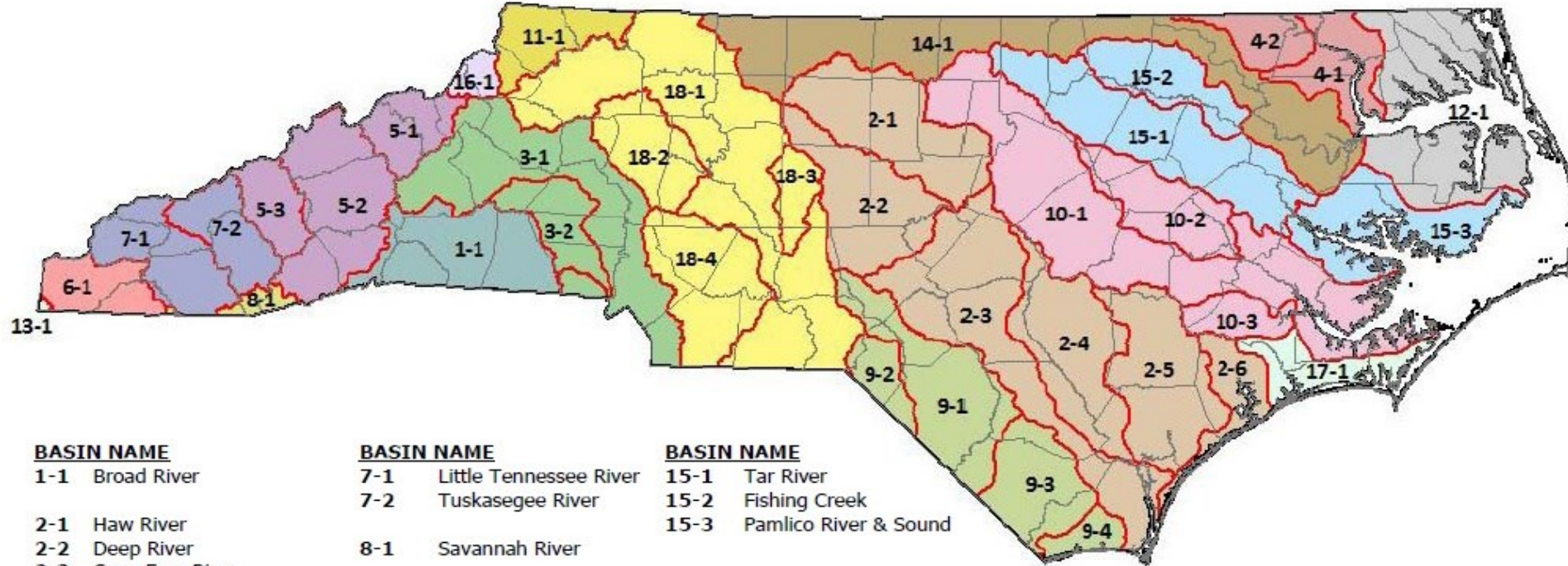
What is an Interbasin Transfer?

- Transfer = Withdrawal – Return
 - Net Transfer, Not Gross



The amount of a transfer is determined by the amount of water moved from the source basin to the receiving basin, less the amount of water returned to the source basin and consumptive use in the source basin.

Designated Interbasin Transfer River Basins As defined in G.S. §143-215.22G



BASIN NAME

- 1-1 Broad River
- 2-1 Haw River
- 2-2 Deep River
- 2-3 Cape Fear River
- 2-4 South River
- 2-5 Northeast Cape Fear River
- 2-6 New River
- 3-1 Catawba River
- 3-2 South Fork Catawba River
- 4-1 Chowan River
- 4-2 Meherrin River
- 5-1 Nolichucky River
- 5-2 French Broad River
- 5-3 Pigeon River
- 6-1 Hiwassee River

BASIN NAME

- 7-1 Little Tennessee River
- 7-2 Tuskasegee River
- 8-1 Savannah River
- 9-1 Lumber River
- 9-2 Big Shoe Heel Creek
- 9-3 Waccamaw River
- 9-4 Shallotte River
- 10-1 Neuse River
- 10-2 Contentnea Creek
- 10-3 Trent River
- 11-1 New River
- 12-1 Albemarle Sound
- 13-1 Ocoee River
- 14-1 Roanoke River

BASIN NAME

- 15-1 Tar River
- 15-2 Fishing Creek
- 15-3 Pamlico River & Sound
- 16-1 Watauga River
- 17-1 White Oak River
- 18-1 Yadkin River
- 18-2 South Yadkin River
- 18-3 Uwharrie River
- 18-4 Rocky River



Water Transfers in North Carolina

- Over 130 public water systems with surface water transfers
- 80% are under 1 MGD
- Nine IBT Certificates have been issued
- Grandfathered allowance for systems that were transferring over 2 MGD prior to July 1993
- Handful of water systems transferring between 1-2 MGD



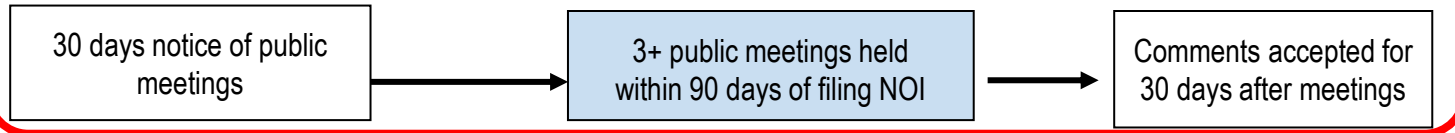
Transfers Regulated by IBT Certificate

	System/Certificate Holder(s)	Year	Amount	Source Basin(s)	Receiving Basin(s)
1.	Piedmont Triad Regional Water Authority	1991	30.5 MGD	Deep River	Haw River, Yadkin River
2.	Charlotte Water	2002	33 MGD	Catawba	Rocky River
3.	Cities of Concord and Kannapolis	2007	10 MGD/ 10 MGD	Catawba/ Yadkin	Rocky River
4.	Greenville Utilities Commission, the Towns of Farmville and Winterville, and Greene Co.	2010	8.3 MGD/ 4.0 MGD	Tar River	Contentnea Creek/ Neuse River
5.	Brunswick County	2013	17 MGD	Cape Fear	Shalotte and Waccamaw
6.	Towns of Cary and Apex	2015	31.0 MGD/ 2.0 MGD	Haw River	Neuse River/ Cape Fear River
7.	Kerr Lake Regional Water System	2015	10.7 MGD/ 1.7 MGD/ 1.8 MGD	Roanoke	Tar River/ Fishing Creek/ Neuse River
8.	Union County and Town of Wingate	2017	23.0 MGD	Yadkin River	Rocky River
9.	Pender County Utilities and Towns of Burgaw, Topsail Beach, Surf City and Wallace and Utilities, Inc.	2018	14.5 MGD	Cape Fear	South River, New River, Northeast Cape Fear

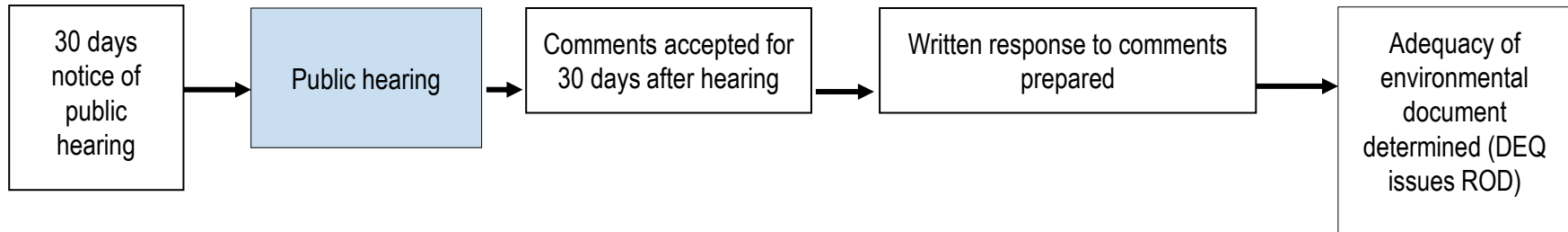


IBT Process § 143-215.22L

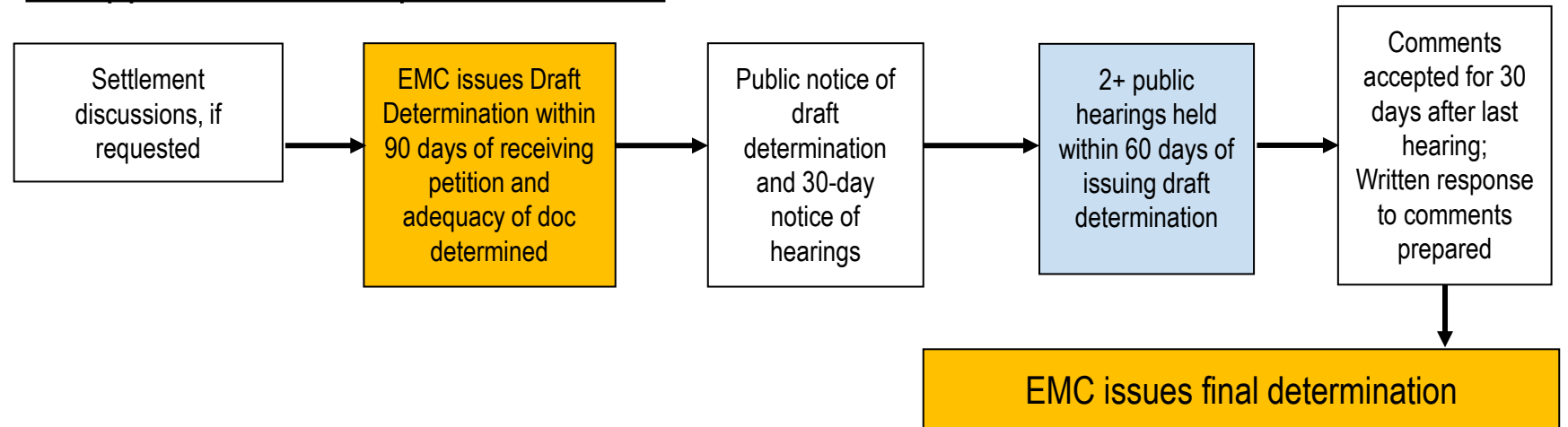
I. Applicant submits Notice of Intent to file a petition.



II. Applicant submits draft environmental document (EIS or EA)



III. Applicant submits petition to EMC



EMC Decision Considerations

- The EMC may grant a Petition in whole or in part, or deny it, and may require mitigation measures to minimize detrimental effects.
- In making this determination, the EMC is required to specifically consider:



Findings of Fact - §143-215.22L

The EMC shall specifically consider:

1. The necessity, reasonableness, and proposed uses of water transferred.
2. Present and reasonably foreseeable detrimental effects on the source basin.
3. Cumulative effects on the source major river basin of any water transfer or consumptive water use currently authorized or projected in a Local Water Supply Plan.
4. Present and reasonably foreseeable beneficial and detrimental effects on the receiving basin.
5. The availability of reasonable alternatives to the proposed transfer.
6. Use of impoundment storage capacity, if applicable.
7. Purposes and water storage allocations in a US Army Corps of Engineers multipurpose reservoir.
8. Whether the service area of the applicant is within both the source and receiving basin.
9. Any other facts or circumstances reasonably necessary.



Conditions/Limitations on IBT Certificate

Specific conditions required by statute:

- Submittal for Division approval
 - Water Conservation Plan
 - Drought Management Plan
 - Compliance and Monitoring Plan
- Quarterly Monitoring Reports
- Ability to reopen, amend, and modify, if necessary
- No selling of transferred water to water systems that are not co-applicants on the Certificate

EMC may impose additional conditions as necessary



Contact Information

Harold Brady

Division of Water Resources

919-707-9005

harold.m.brady@ncdenr.gov

DWR IBT website: <https://www.ncwater.org/?page=297>

